

Systems

Automatic Meter Reading System

Landis
Gyr+
manage energy better



ADVANCE ECONOMIC

Multiutility Data Acquisition and Data Management
for Residential, Industrial, Commercial and Grid

Philosophy

Metering devices for metering electricity, heat, gas, water and anything else that can be called energy have a common denominator.

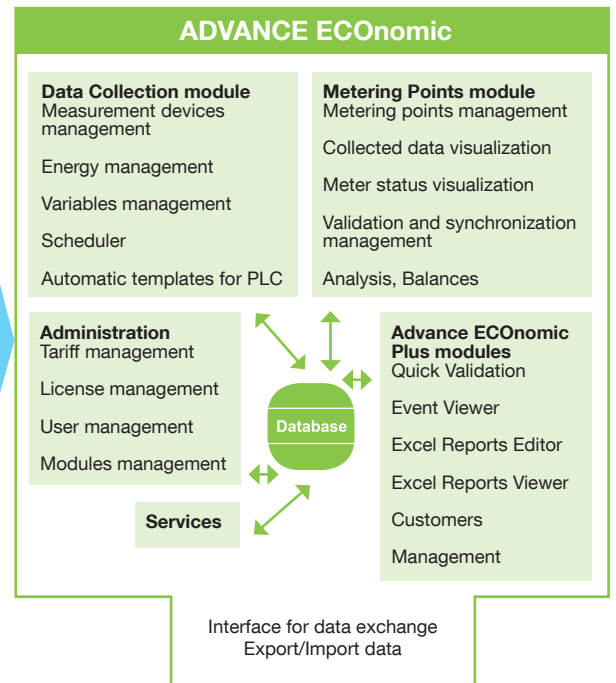
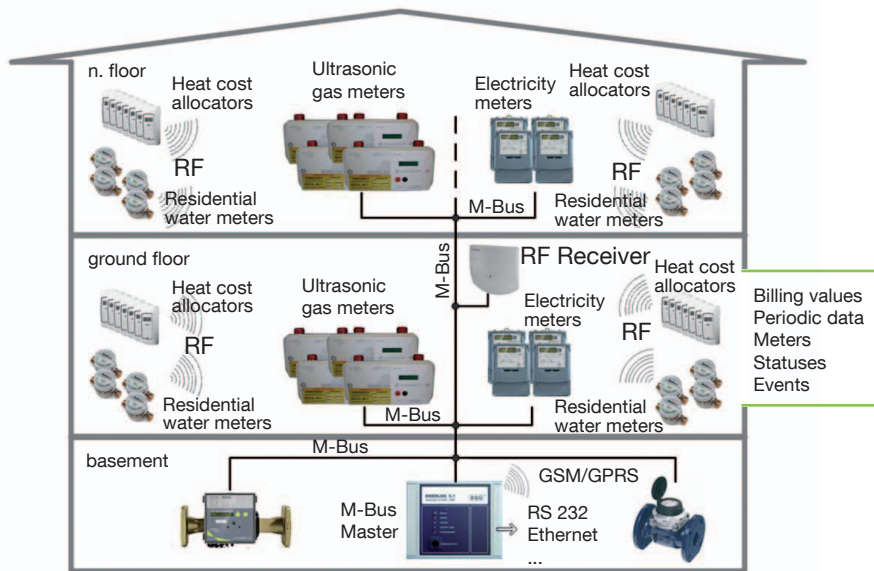
The significance of energy, as a type of information, is increasing dramatically. Energy is expensive and so data about its flow is becoming highly valuable.

Devices intended for metering contain not only large volumes of energy data but also a lot of other valuable information for the field of identification, statistics, security and communications. To be able to use this information in the area of economics, technology or environmental protection, we need to know how to collect, store, aggregate, validate and forward it farther on.

All this is possible thanks to an efficient and reliable tool called ADVANCE ECONomic.

Functionality

- + Automatic acquisition of data for billing and recording of profiles
- + Data normalisation
- + Quick data preview
- + Management of templates and measuring devices
 - + AutoTemplate feature
- + Data visualization (graph, table)
- + Aggregation functions
- + Dynamic groups
- + Virtual metering points
- + Data comparison
- + Data substitution, editing
- + Data export
- + Tariff management and data structuring



Protocols

(Wireless) M-BUS
IEC1107 (VDEW2)
IEC807
DLMS
SCTM
PERM
HANDHELD
DIN19244
PRIME
Others upon request

Interfaces

M-BUS
PSTN
GSM/SMS
GSM/GPRS
RS232
ISDN
PLC
Ethernet
File Import

Data export





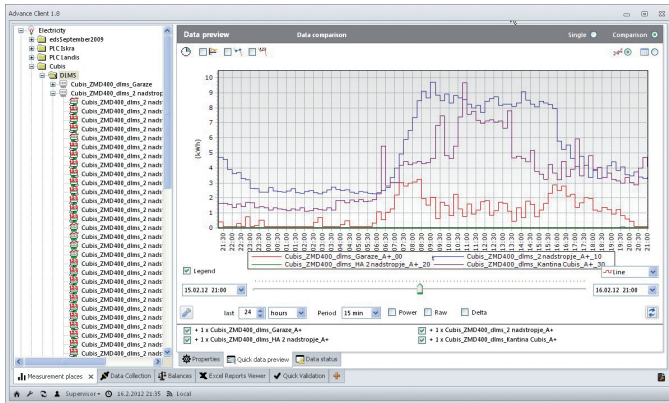
Simplicity

The ADVANCE ECONOMIC system is an up-to-date program created on the .NET platform, intended for data acquisition from metering devices. The system is a comprehensive tool for the administration and dynamic management of metering points. It provides simple work with data, their fast viewing, export and charts. Data are stored in RDBMS MS SQL Express.

Its intuitive navigation resembles other Windows programs and its layout is similar to the Explorer.

Data can be dragged and dropped. Individual activities (e.g. Insert, Edit and Delete) are accessible through rollout menus and buttons.

All of this provides for a simple usage of this stable and reliable system.



Modularity

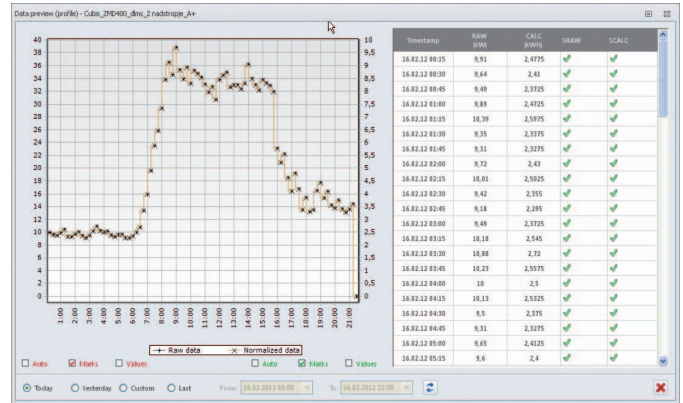
The system is based on several modules, each of them intended for a particular area:

Measurement places – defines physical and virtual metering points or their groups; displays statuses (missing data, failures) as well as collected data in tables or charts; setup of validation and synchronization, analyses and summaries.

Data collection – defines individual physical measurement devices, readout channels, processed media types, energies and variables. An integrated scheduler initiates data acquisition in the predefined periods and times.

Automation

Automated data acquisition scheduled in the system brings many advantages. Up-to-date and actual data are always available. Automation eliminates the human factor, thus reducing the probability of errors related to manual data input. Automation also contributes to the reduction of operating costs.



Other modules are available for customizing the application, tariff control, license management, administration of access authorizations etc. Additional modules can be ordered separately for the ADVANCE ECONOMIC PLUS version depending on customer needs.

System requirements

- Intel Core2 CPU
- 1024 x 768+ display resolution
- 1 GB RAM (2 GB recommended)
- 40 GB HDD
- MS Windows XP SP3 or later (2003 server, Vista, 7, 2008 server) 32-bit or 64-bit
- MS SQL Server 2008 (MS SQL 2008 R2 Express supplied)

About Landis+Gyr

Landis+Gyr is the leading global provider of integrated energy management products tailored to energy company needs and unique in its ability to deliver true end-to-end advanced metering solutions. Today, the Company offers the broadest portfolio of products and services in the electricity metering industry, and is paving the way for the next generation of smart grid.

Landis+Gyr, a standalone growth platform of the Toshiba Corporation (TKY:6502) and 40% owned by the Innovation Network Corporation of Japan, operates in 30 countries across five continents, and employs 5,000 people with the sole mission of helping the world manage energy better.

More information is available at landisgyr.cz.

Landis+Gyr in short

- 5,000 employees worldwide
- Operations on all five continents
- Broadest portfolio of products and services in the industry
- 25 years of smart metering experience
- 1,000 AMM systems delivered
- 300 million energy meters produced
- Largest relevant engineering capacity in the industry
- 65 years of direct load management experience
- 15 million load management receivers produced
- ISO certified for quality and environmental processes
- World leader in integrated energy management solutions
- Committed to improved energy efficiency and environmental conservation
- Solid and established partner network

Landis+Gyr AG

Theilerstrasse 1
6301 Zug
Switzerland
Phone: +41 41 935 6000
Fax: +41 41 935 6601
info@landisgyr.com

www.landisgyr.com/europe

Landis+Gyr s.r.o.

Plzeňská 5a
150 00 Praha
Tel. +420 251 119 511
Fax +420 251 119 519
info@landisgyr.cz

www.landisgyr.cz